



Cybersecurity and Smart Technology R&D Building in Shalun Smart Green Energy Science City

Smart Application Pillars

High Speed Network & Cybersecurity Environment

Cybersecurity Threat
Information Center

Data Networks

Industrial
Control Networks

Cybersecurity Attacks
& Defence Platform

SMART TRANSPORTATION

SMART HEALTH

SMART LIVING

Internet of Vehicles

Smart Traffic Management

Self-Driving Car Component Technology

Testing & VR Environment

Taiwan CAR Lab

Personal Data Protection

Medical Big Data

Health Care Service

Wearable Health Equipment

Smart Aid Devices

IoT Applications

5G Smart Applications

Smart Energies

Smart Cities

Smart Factories

Taiwan Global Competitiveness

Competitiveness, Innovation Capabilities, Digitalization and Semiconductor Supply Chains

#1

2021 Semiconductor Manufacturing & IC Testing

#4

2021 BERI Global Investment Report

#5

2020 Bloomberg Global Innovation Index

#8

2021 IMD Global Competitiveness

Advantages

A Crucial Base for Cybersecurity and Smart Technology R&D in the Asia-Pacific Region

Unique Cybersecurity and
Smart Tech R&D Base

*Developing the smart tech industry with
High Speed Network & Cybersecurity Environment*

Excellent Timing for
Future Development

*Government investment up to NT\$56 billion
Industry clusters thru collaboration of industry,
government & academic investment with an expected
output value of over NT\$100 billion.*

Superior Location

3 hrs
flight times

- *Seoul*
- *Osaka, Tokyo*
- *Hong Kong*

5 hrs
flight times

- *Bangkok, Ho Chi Minh City*
- *Kuala Lumpur, Singapore*
- *Jakarta*



Superior Location

3 hrs
flight times

- *Seoul*
- *Osaka, Tokyo*
- *Hong Kong*

5 hrs
flight times

- *Bangkok, Ho Chi Minh City*
- *Kuala Lumpur, Singapore*
- *Jakarta*



Shalun
Heart of Southern Taiwan

A Hub in the Southern S&T Corridor

5 mins
HSR Station

- *Taiwan HSR Station*
- *Shalun Railway Station*

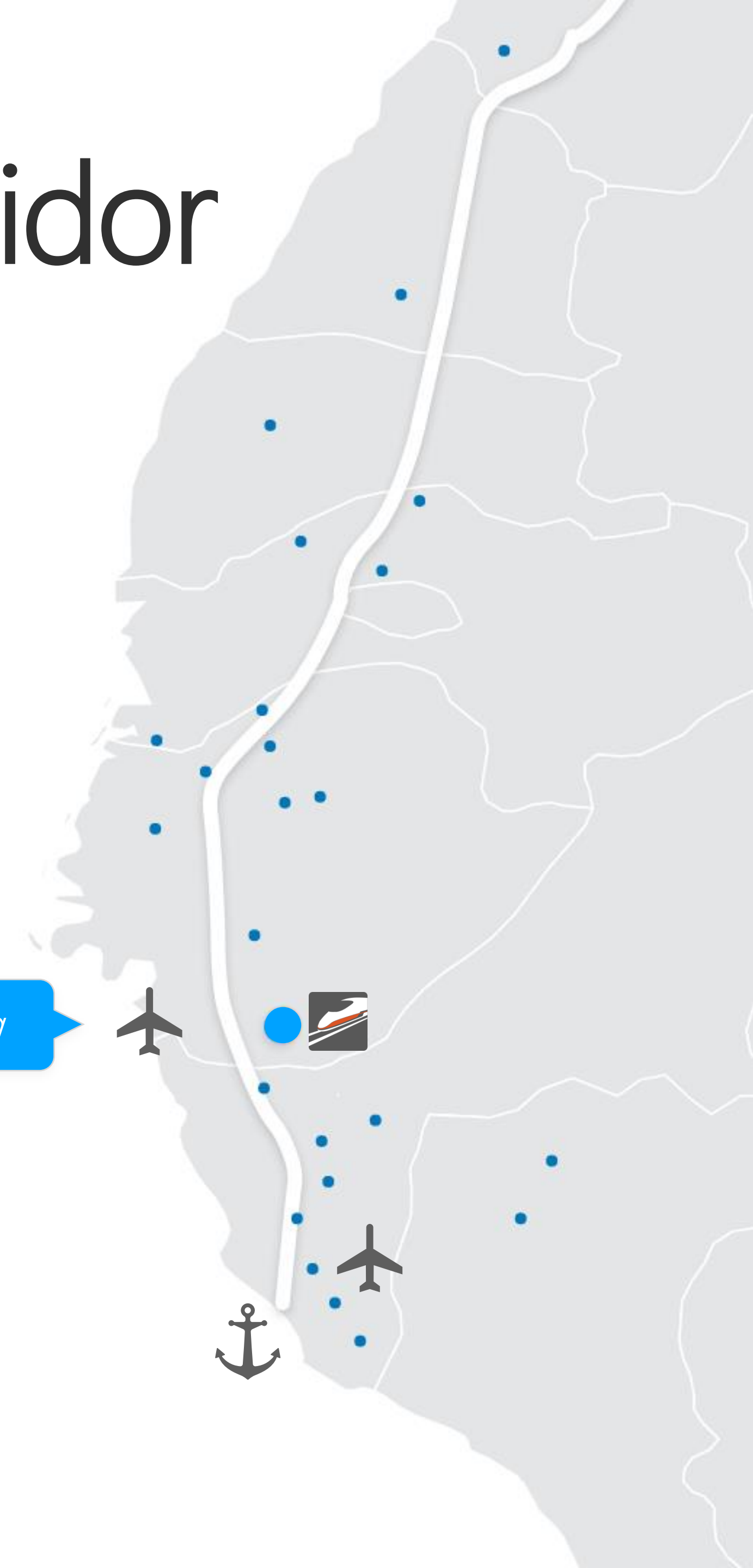
45 mins
International Airport

- *Tainan Airport*
- *Kaohsiung International Airport*

30 parks

- *Industrial Parks*
- *Science Parks*
- *Export Processing Zones*

CAST R&D Building



Industry Clusters

Industry, Government, Academia and Research Institution



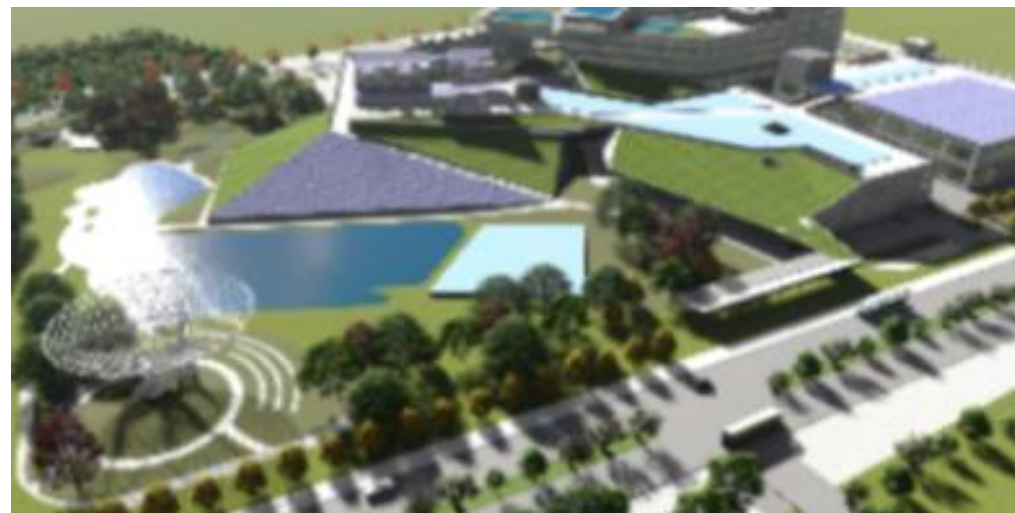
1 Taiwan CAR Lab



C CAST R&D Building



E Academia Sinica Southern Campus



D Green Energy Tech Demonstration Site



B,F,X Industry R&D Area

Amenity and Liveability

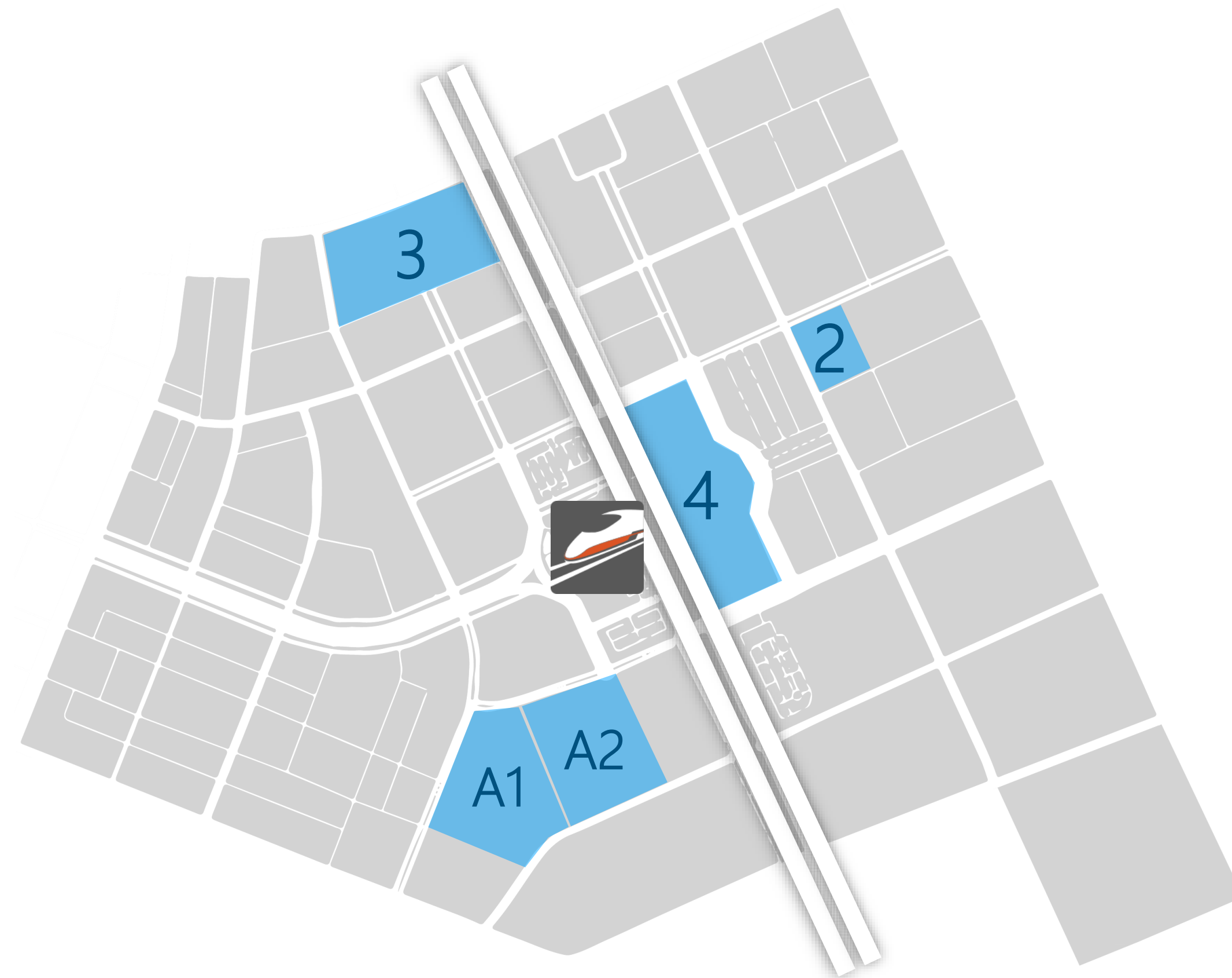
Liveable & Business-friendly Environment



3 Shalun K12 Bilingual School



A ICC Tainan



2 TaiSugar Circular Village



4 Mitsui Outlet

CAST



6F

*Startups and TTA South
Tech Startups Social Space*

5F

*Cybersecurity Testbed & Talent Training
Cyber Offensive & Defensive Platform*

4F

*Key Companies in Cybersecurity &
Smart Technologies*

3F

*1. Anchor Firms
2. Startups*

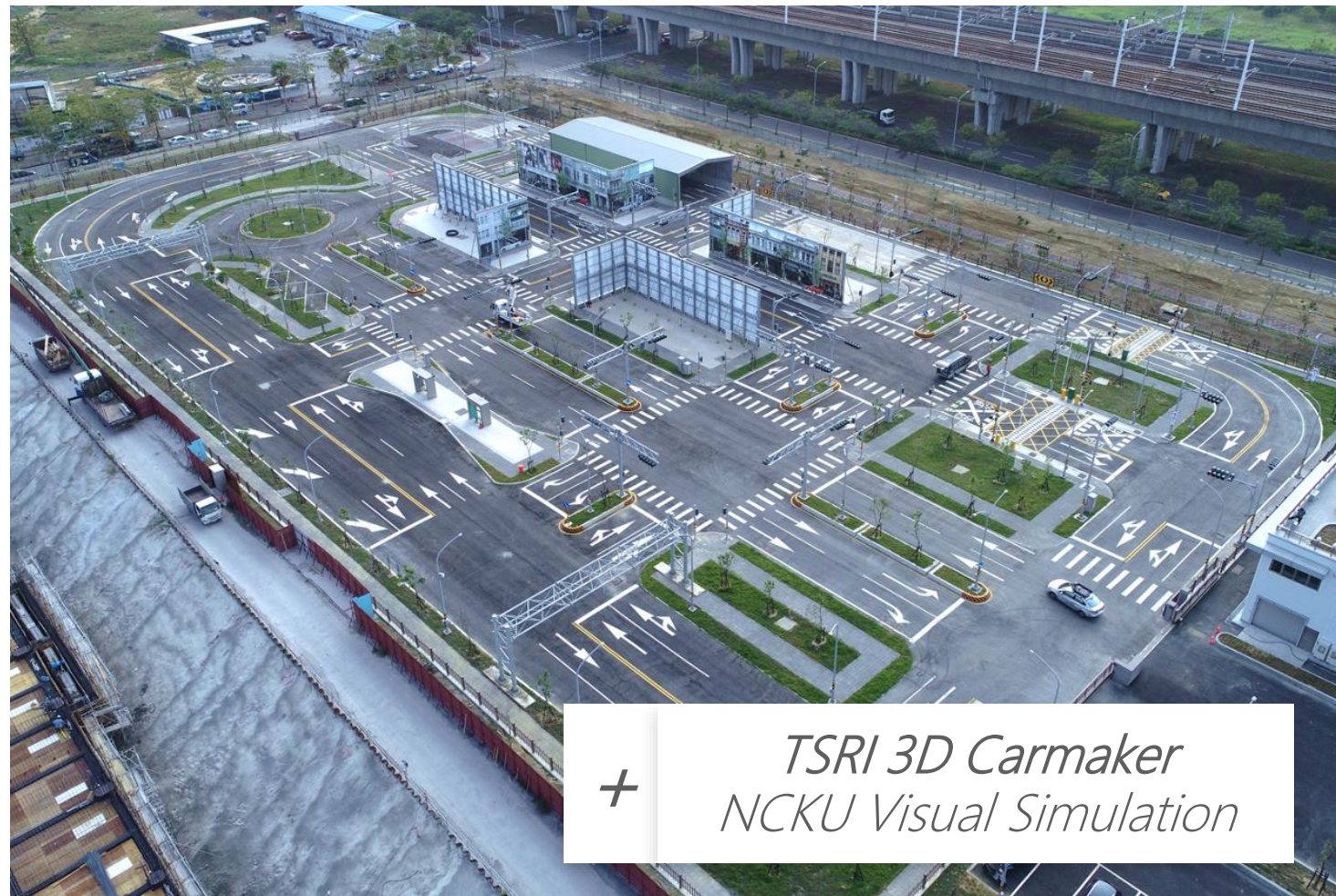
2F

*3. International co-RD Center
4. CCoE*

1F

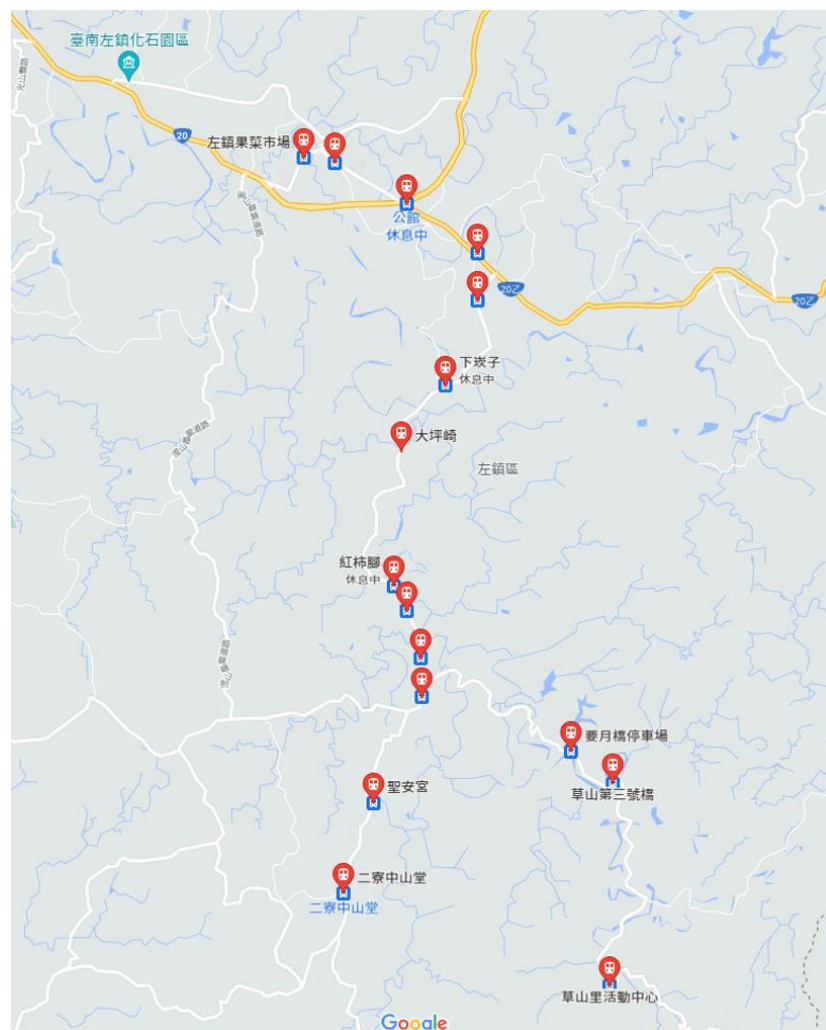
*Physical & Virtual Testing Facilities
1. Simulation Platform
2. OT Security Test Lab
3. Demo Space*

Smart Transportation Testing Resources



Taiwan CAR Lab

- *Asia's Unique Mixed-flow Vehicle Testing Environment*
- *Taiwan's First Self-driving Vehicle Test Site*
- *Government Authorized Self-driving Vehicle Test Reports*



Zuojhen Advanced Smart City / Data Governance Experimental Zone

- *Served by Tainan Taxi/Bus Routes **G13** and **G28***
- *Two-way **Smart Station Roadside Unit** (32 Stations)*
- *Non-intrusive Collection of Vehicle, Road, and Driving Data*

Potential Resident Partners

who are

- *Developing Cybersecurity Technology*
- *Startups*

who need

- *High Speed Network & Cybersecurity Environment*
- *Cybersecurity Training*



1st Group of Resident Partners

Opto-electronics, Cybersecurity, AI, and Smart Tech



Top AI Cybersecurity Company



Taiwan Information Service Industry Leader



Taiwan's First ISO 27001 Cybersecurity Certified Company



NAR Labs Contact Info:
Phone: 06-303-2550
E-mail: richard_cchsu@narlabs.org.tw